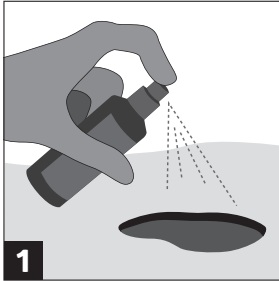
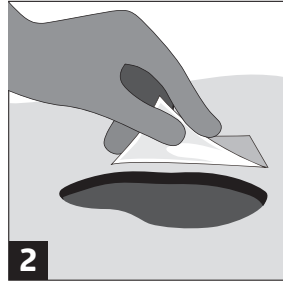


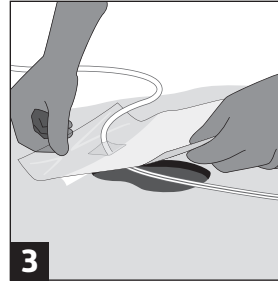
THE *NewEra*™ REVA KIT



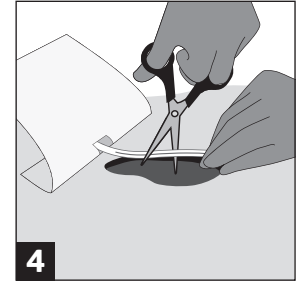
1
Cleanse the wound with PhaseOne™ Wound Cleanser



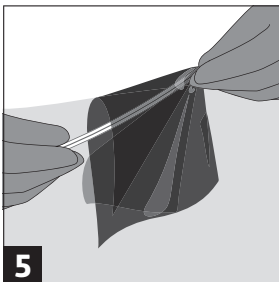
2
Apply Skin Tac™ to the peri-wound area.



3
Remove TAB 1 of the REVA skirt and place adjacent to wound to secure it in place.



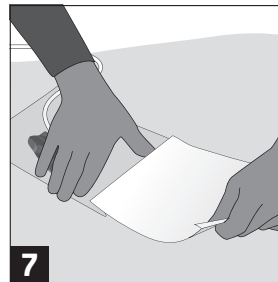
4
Cut the REVA drain to a length appropriate for the wound.



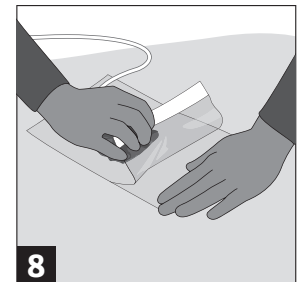
5
Loosely wrap the REVA drain with Cutimed® Sorbact®



6
Fluff and fill™ any additional space in the wound.



7
Remove TAB 2 of the REVA skirt and cover the wound. If additional material is needed, use the provided IHT drape.



8
Remove TAB 3 of the REVA skirt to remove top layer.

BEFORE BEGINNING, inspect the integrity of the packaging and the contents within the *NewEra*™ REVA Kit.

STEP 1 ▶ Open the bottle of PhaseOne™ by twisting the lid to break the perforation. DO NOT remove the shrink-wrap around the bottle—it is there in case the bottle breaks. PhaseOne may be poured or sprayed. The wound does not need to be irrigated afterward. Prepare and cleanse the wound with PhaseOne and/or according to facility protocol or physician orders. This includes measuring the wound size for documentation.

STEP 2 Prepare the peri-wound area with a skin barrier. Apply to a 2-inch surrounding surface area (peri-wound). Allow skin barrier to dry. SkinTac™ is included in the kit.

STEP 3 ▶ Remove the tab labeled “1” on the REVA skirt. Place it adjacent to the wound so that the adhesive skirt makes a consistent

seal across the skin. Ensure the REVA drain is approximately 1” away from the edge of the wound.

STEP 4 ▶ If required, cut REVA drain to fit wound dimensions. Cut the drain approximately 1” shorter than the base or sides of the wound site.

STEP 5 ▶ Remove the Cutimed® Sorbact® dressing from the *NewEra* REVA Kit. Loosely wrap the REVA drain with Cutimed Sorbact and place in the wound bed. If necessary, use scissors to cut or trim the Cutimed Sorbact to the correct size and shape of the wound. **Do not cut the Cutimed Sorbact over the wound bed.** Before placing the dressing in the wound bed, remove any loose particles that may be present on the dressing. If more than one piece is used, document the number of pieces of Cutimed Sorbact that were placed in the wound.

STEP 6 ▶ Loosely fill any extra space with Cutimed Sorbact. Do not over pack the wound.

STEP 7 ▶ Remove tab labeled “2” of the REVA skirt and cover over the wound and Cutimed Sorbact dressing. Secure the skirt over the Cutimed Sorbact dressing and wound area by pressing firmly. If additional material is required, use the included IHT Drape.

STEP 8 ▶ Once the skirt is in place, you may remove the upper tab labeled with the number “3.”

Check for dressing leaks. Begin therapy, according to physician’s orders for the NPWT settings, by powering on the pump. Proceed according to the pump manual to adjust settings.

Follow facility policy or physician’s orders for frequency of dressing changes.

THE *NewEra*™ REVA KIT

INDICATIONS

The NewEra Drain Kit is indicated for patients who would benefit from the application of negative pressure to the area of a wound to promote wound healing by the drainage of fluids and infected materials from the wound and wound bed. The system is intended for acute, institutional, and long-term care use and only when prescribed by a physician. Product may be indicated for patient home-care, when carefully monitored by licensed home health-care providers, and only when prescribed by a physician.

CONTRAINDICATIONS

Negative Pressure Wound Therapy is contraindicated for the following reasons for wound treatment:

- ▶ Non-enteric and unexplored fistulas
- ▶ Exposed anastomotic site
- ▶ Presence of necrotic tissue
- ▶ Malignancy (except for quality of life reason for terminal patients)
- ▶ Untreated osteomyelitis
- ▶ Untreated malnutrition
- ▶ Use on exposed arteries, veins, or organs

WARNINGS

- ▶ Consult the Instructions for Use, indications for use, precautions, and contraindications for the Negative Pressure Wound Therapy device.
- ▶ To prevent unintentional gauze retention, all dressings are removed from the wound and wound bed.
- ▶ Upon removal of dressing(s), the wound bed should be cleaned in accordance with standard wound care practices, prior to the ap-

plication of new sterile dressing.

- ▶ If necessary, all wounds should be debrided prior to application of the therapy and/or dressings.
- ▶ Ensure there are no pockets left in the wound bed after application of the dressing.
- ▶ Infected wounds may need more frequent dressing changes, up to twice a day, and the patient and the wound must be inspected regularly for signs of increased infection or sepsis.
- ▶ Patients who do not have adequate hemostasis, and on whom anticoagulation or platelet aggregation inhibitors are being used, have an increased risk of bleeding with or without the NewEra Drain Kit.
- ▶ All arteries, veins, tendons, ligaments, nerves, and other organs have to be covered completely prior to application of the NewEra Drain Kit.
- ▶ Infected tissue, such as blood vessels, may have a weakened structure and have to be treated with care.
- ▶ Infected blood vessels may bleed more readily than normal blood vessels.

PRECAUTIONS

- ▶ Patients on anticoagulants or with difficult hemostasis should be treated with caution and have to be controlled regularly for bleeding.
- ▶ Patients with infections in the wound and/or other parts of the body have to receive proper systemic treatment.
- ▶ Non-compliant patients
- ▶ The NewEra Drain Kit has not been studied on pediatric patients.



Latex Free



Single Use Only



Temperature
Limitation



Products Individually
Sterilized



Consult Instructions
for Use



Keep Dry



Integrated Healing Technologies